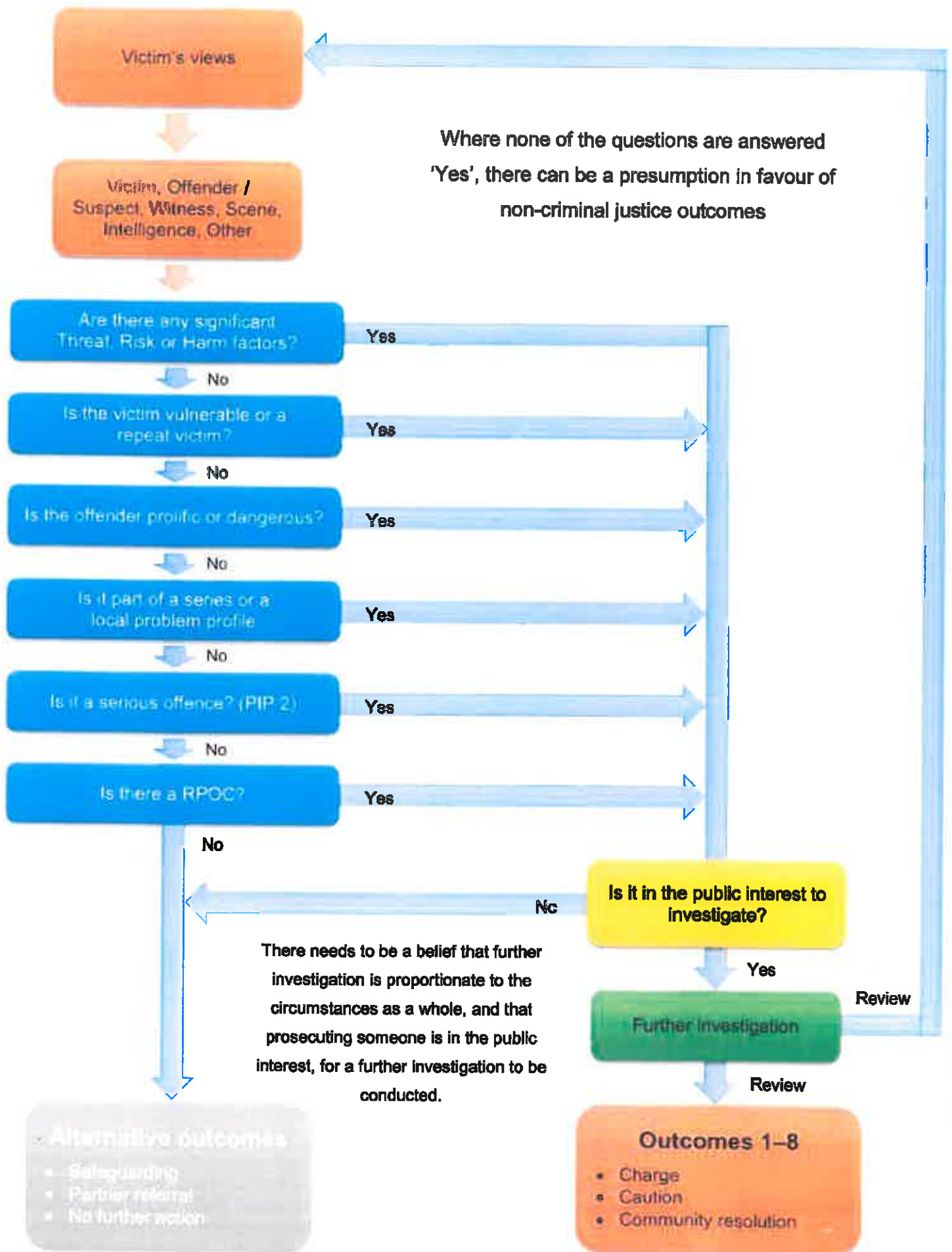


# Proportionate Investigation Framework



## SOLVE - Crime allocation decision making

The way crime is investigated can have a significant impact on victims, witnesses, suspects and the wider community; it can undermine or strengthen public confidence in the police.

This five-point 'SOLVE' approach, utilising the National Decision Making Model, sets out how we allocate crime.

## The five-point 'SOLVE' approach



Further information on the relevant procedural instructions can be found at  
**Pi9.12 - Crime Management - Crime Allocation Instruction**